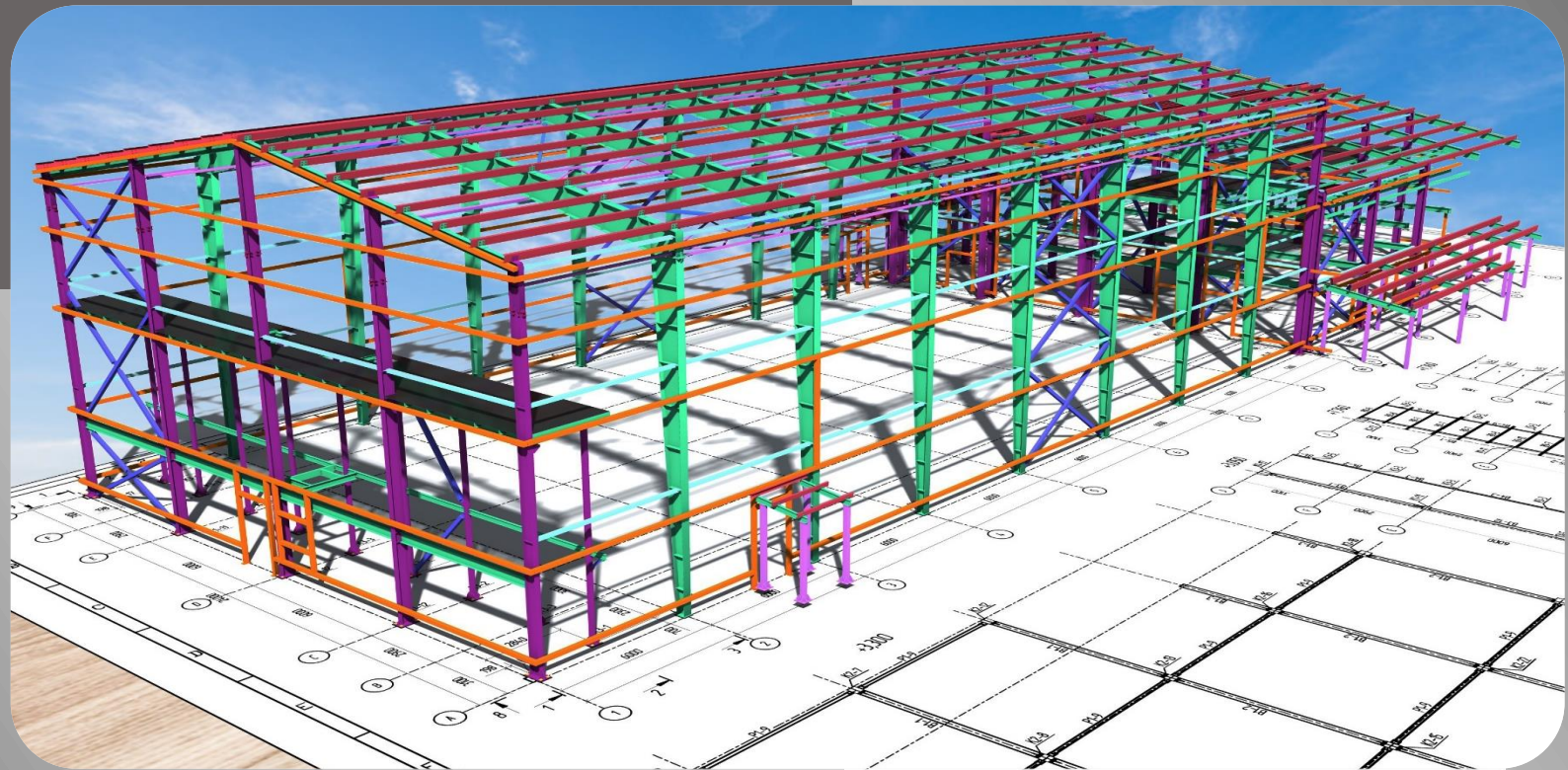


# Company Profile



[www.midassolutions.com.au](http://www.midassolutions.com.au)

## INTRODUCTION

We are structural engineers specializing in steel, concrete, timber and brick structural design and detailing. We also provide specialized inspections and repair methodologies and retrofits for residential and commercial buildings, Bridges, Culverts and overhead Gantry structures Australia wide. Services are offered individually or within cost-efficient bundled service programs tailored to the specific needs, budgets, and service goals of our customer.

For more than seven years we have served the needs of commercial building owners and managers, corporate facilities and campuses, retail services and centers, financial and banking institutions, medical office buildings, high-tech facilities, industrial and manufacturing facilities, federal and state facilities, city and county municipal buildings, public grounds and parkways, restaurants, non-profit organizations, homeowner associations, multi-family housing developments, high-end residential estates, and various other end users.

# CONTENTS

About Us .....	3
1.1 Vision & Mission .....	3
1.2 Quality Policy .....	3
1.3 HSSE Policy .....	4
1.4 People .....	5
1.5 Sustainability .....	5
1.6 Culture .....	5
1.7 Innovation .....	6
1.8 Clientele .....	6
2 services .....	7
2.1 Structural Analysis Services .....	7
2.2 Structural Design Services .....	7
2.3 Building information modelling (BIM) .....	7
2.4 Seismic Engineering Services .....	8
2.5 Wind Engineering Services .....	8
2.6 Retrofitting and Rehabilitation .....	8
2.7 Construction Management and Supervision .....	9
2.8 Project Planning, Scheduling, Estimation and Control .....	10
2.9 Level-1 Inspections: .....	11
2.10 Level-2 Inspections: .....	11
2.11 Level-3 Investigations: .....	11
2.12 CAD Services .....	11
3. Contact Details .....	12

## ABOUT US

**M**idas Solutions was set up to provide a fast and reliable services to our corporate clients throughout the Australia and Canada.

With our "One-Source" fully integrated service approach, we offer a complete range of services, so our customers have the convenience of dealing with a "Single Source" provider for any or all of their service needs. Whether you have one location or hundreds, you'll deal with dedicated, results-driven, hands-on professionals providing you with customized solutions, cost-saving efficiencies, quick turnaround, and straightforward answers implemented with simplified billing and administration processes.

Commitment to outstanding customer care and relationships result in continuous and fresh innovative solutions.

We aim to reduce the workload of our clients with effective communication and by providing professional and reliable services by throughout the year.

### 1.1 VISION & MISSION



The MS Team is dedicated to the idea that every client is a long term relationship. Our mission is to provide an environment that is clean, safe, and an enhancement to the workday. No problem is too small, no job too big, and no client is taken for granted.

### 1.2 QUALITY POLICY



It is the objective of MS to satisfy the quality and delivery requirements of our customers at competitive prices. We will measure our performance in meeting customers' needs and work with them to improve the service that we provide continually. The main focus of our activities is the provision of road, rail and building structural design and management.

To achieve this objective, the company will maintain an effective and efficient Quality Management System based upon the requirements of International Standards.

### IN PARTICULAR, MANAGEMENT WILL:

- Monitor and measure the effectiveness of our business processes and company objectives through our Management Reviews and Internal Audit Processes.
- Monitor customer satisfaction and set objectives for continuous improvement.
- Analyze the causes of any complaint and take appropriate action to prevent a recurrence.
- Ensure the availability and competence of the support resources for the core processes.
- Ensure that the company provides its services to all clients equally, without discrimination on the basis of colour, race, nationality, ethnic or national origin.
- Provide the necessary work environment to ensure the well-being of our employees and visitors.
- Encourage all employees to identify problems and make suggestions to improve all aspects of our working practices. These will be considered by senior management and appropriate actions taken and communicated.
- Ensure that all employees are aware of our Quality Policy and committed to the effective implementation of our Quality Management System.
- Ensure that the company complies with all necessary regulatory and legal requirements.
- The achievement of our quality objectives and continuous improvement is fundamental to all activities carried out within our company and must be practised by all employees as an integral part of their daily work.



### 1.3 HSSE POLICY

#### OUR STATEMENT OF GENERAL POLICY IS:

---

- to provide adequate control of the health and safety risks arising from our work activities;
- to consult with our employees on matters affecting their health and safety;
- to provide and maintain safe plant and equipment;
- to ensure secure handling and use of substances;
- to provide information, instruction and supervision for employees;

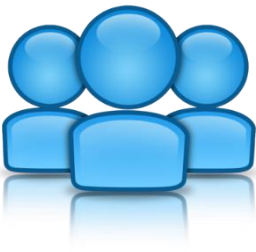
- to ensure all employees are competent to do their tasks and to give them adequate training;
- to prevent accidents and cases of work-related ill health;
- to maintain safe and healthy working conditions; and
- to review and revise this policy as necessary at regular intervals.

## RESPONSIBILITIES

---

All employees have to:

- co-operate with supervisors and managers on health and safety matters;
- not interfere with anything provided to safeguard their health and safety;
- take reasonable care of their own health and safety; and
- Report all health and safety concerns to an appropriate person (as detailed in this policy).



### 1.4 PEOPLE

Great companies achieve superior results for their clients with extraordinary people—this is the net effect of the MS culture. One of the most significant challenges facing organizations today is attracting and retaining "the best and the brightest" professionals to serve our client's need.



### 1.5 SUSTAINABILITY

MS has incorporated several sustainability initiatives in our buildings and programs and will continue to expand and develop environmental best practices in our operations across the country. We believe sustainability is not only good corporate citizenry but also good business.



### 1.6. CULTURE

MS is committed to a sustainability-minded culture in every division and at every level. Our client sites will be managed according to sustainability best practices, with a focus on the following efforts:

- Employee training and education
- Implementation of MS/Green Clean
- Energy conservation
- Indoor air quality
- Resource conservation
- Responsible procurement

- Transportation
- Waste reduction



### 1.7. INNOVATION

MS will strive to be a sustainability innovator. We will test promising sustainable technologies in real-life circumstances in our portfolio to identify and implement the most effective products and services. Further, we will maximize our environmental impact by leveraging our ability to control approximately 100 million square feet of real estate. We will seek opportunities to effect change on a portfolio-wide basis and take advantage of our financial and operational strength to pursue creative solutions.



### 1.8. CLIENTELE

We treat every client as a strategic partner. Engineering options for clients by utilizing our industry expertise, financial strength and environmental leadership to drive down risk and manage down our clients cost exposure. MS builds long term relationships with our clients to allow better them to focus on their core business.



## 2 SERVICES



MIDAS Solutions is a full-service engineering firm specializing in the design, assessment and analysis of structures. Our team of experienced engineers, project managers, and designers work collaboratively to deliver high-quality, innovative solutions for our clients. We are committed to providing cost-effective, efficient, and sustainable engineering solutions.

Services: We offer a wide range of services, including:

- Structural analysis and design
- Building information modelling (BIM)
- Seismic and wind engineering
- Retrofitting and rehabilitation
- Construction management and supervision
- Project planning, scheduling, estimation and control
- Level-1 Inspections
- Level-2 Inspections
- Level-3 Investigations

### 2.1. Structural Analysis Services

We offer a variety of structural analysis services, including:

**LOAD ANALYSIS:** We determine the forces and loads that a structure will be subjected to in order to ensure that it can withstand them.

**FINITE ELEMENT ANALYSIS (FEA):** We use FEA software to simulate the behaviour of a structure under various conditions and determine its strength, stability, and stiffness.

**DYNAMIC ANALYSIS:** We analyse the behaviour of structures subjected to dynamic forces, such as wind or seismic activity, to ensure that they can withstand these forces and maintain their stability.

### 2.2. STRUCTURAL DESIGN SERVICES

Our structural design services include:

**DESIGN OPTIMIZATION:** We work closely with our clients to develop structural designs that are optimized for their specific needs and requirements, while also minimizing material usage and cost.

**CONSTRUCTION DOCUMENT PREPARATION:** We prepare detailed construction documents that include drawings, specifications, and calculations for use in the construction process.

**VALUE ENGINEERING:** We help our clients identify opportunities to reduce costs while maintaining structural integrity and performance.

### 2.3. Building information modelling (BIM)

At our company, we specialize in providing high-quality BIM services for a wide range of construction projects. Our team of experienced BIM professionals is committed to delivering innovative, collaborative, and efficient solutions that improve project coordination, reduce errors, and save time and costs. We offer a variety of BIM services, including:



**BIM IMPLEMENTATION:** We help our clients implement BIM processes and tools that are tailored to their specific project needs and requirements.

**BIM MODELLING:** We create detailed BIM models that contain all of the information related to the project, including geometry, materials, specifications, and more.

**BIM COORDINATION:** We use BIM models to facilitate collaboration and coordination among project stakeholders, including architects, engineers, contractors, and owners.

**BIM VISUALIZATION:** We use BIM models to create visualizations that help our clients better understand the project and make more informed decisions.

## 2.4. Seismic Engineering Services

We offer a variety of seismic engineering services, including:

**SEISMIC DESIGN:** We design structures that can withstand the expected ground motion based on the seismic hazard analysis. This includes selecting appropriate structural systems, materials, and components, as well as ensuring proper detailing and construction practices.

**SEISMIC RETROFITTING:** We evaluate existing structures and design retrofit solutions to improve their seismic performance.

## 2.5. Wind Engineering Services

Our wind engineering services include:

**WIND HAZARD ANALYSIS:** We evaluate the wind hazard at a site to determine the maximum wind loads that can be expected, which is critical for designing structures that can withstand wind.

**WIND SIMULATION:** We use specialized wind load software to simulate the behaviour of structures under different wind conditions and optimize their design for wind loads.

**WIND LOAD DESIGN:** We design structures that can withstand the expected wind loads based on the wind hazard analysis and wind tunnel testing. This includes selecting appropriate structural systems, materials, and components, as well as ensuring proper detailing and construction practices.

## 2.6. Retrofitting and Rehabilitation

At our company, we specialize in providing high-quality retrofitting and rehabilitation services for existing structures. Our team of experienced engineers and designers is committed to delivering innovative, cost-effective solutions that improve the safety, durability, and functionality of your building. We offer a variety of retrofitting services, including:

**SEISMIC RETROFITTING:** We evaluate existing structures and design retrofit solutions to improve their seismic performance. This includes adding new structural elements, reinforcing existing ones, and improving connections between elements.

**STRUCTURAL RETROFITTING:** We evaluate the load capacity of existing structures and design retrofit solutions to improve their strength and stability. This includes adding new structural elements, reinforcing existing ones, and improving connections between elements.

**ENERGY RETROFITTING:** We evaluate the energy performance of existing structures and design retrofit solutions to improve their energy efficiency. This includes adding insulation, upgrading mechanical and electrical systems, and using renewable energy sources.

**STRUCTURAL REHABILITATION:** We evaluate the condition of existing structures and design rehabilitation solutions to improve their durability and functionality. This includes repairing or replacing damaged or deteriorated elements, improving waterproofing and corrosion protection, and improving drainage.

**HISTORICAL REHABILITATION:** We evaluate the historical significance of existing structures and design rehabilitation solutions that preserve their architectural and cultural value. This includes repairing or replacing damaged or deteriorated elements using historically accurate materials and methods.

## 2.7. Construction Management and Supervision

At our company, we specialize in providing high-quality construction management and supervision services for a wide range of construction projects. Our team of experienced construction managers and supervisors is committed to delivering innovative, cost-effective solutions that ensure your project is completed on time, within budget, and to the highest quality standards. We offer a variety of construction management services, including:

**PROJECT PLANNING:** We develop project plans that establish project objectives, timelines, budgets, and resource requirements. This includes developing project schedules, identifying critical paths, and establishing quality standards.

**CONTRACT ADMINISTRATION:** We manage the contractual aspects of the project, including preparing contracts, managing change orders, and ensuring compliance with contractual obligations.

**COST MANAGEMENT:** We monitor project costs and develop cost-control measures to ensure the project stays within budget. This includes developing cost estimates, analysing cost variances, and identifying cost-saving opportunities.

**QUALITY MANAGEMENT:** We establish quality standards and develop quality-control measures to ensure the project meets or exceeds industry standards and client expectations. This includes developing quality-assurance plans, conducting quality inspections, and implementing corrective actions.

**SITE SUPERVISION:** We supervise the construction activities on site to ensure they are performed safely, efficiently, and to the highest quality standards. This includes managing subcontractors, coordinating with suppliers, and ensuring compliance with safety regulations.

**QUALITY ASSURANCE:** We perform quality inspections to ensure construction activities meet or exceed industry standards and client expectations. This includes reviewing construction drawings, conducting field inspections, and performing material testing.

**PROGRESS MONITORING:** We monitor the construction progress to ensure the project stays on schedule. This includes reviewing construction schedules, analysing progress variances, and identifying delays.

## 2.8. Project Planning, Scheduling, Estimation and Control

At our company, we specialize in providing high-quality project management services that ensure your project is completed on time, within budget, and to the highest quality standards. Our team of experienced project managers is committed to delivering innovative, cost-effective solutions that meet or exceed industry standards and client expectations. We offer a variety of project planning services, including:

**SCOPE DEFINITION:** We define the scope of the project and establish project objectives, timelines, budgets, and resource requirements.

**RISK ASSESSMENT:** We identify potential project risks and develop risk mitigation strategies to minimize their impact on the project.

**PROJECT ORGANIZATION:** We establish project teams, assign roles and responsibilities, and develop communication plans to ensure all stakeholders are informed and engaged throughout the project.

**PROCUREMENT PLANNING:** We develop procurement plans that identify the goods and services required for the project and establish procurement timelines and budgets.

**WORK BREAKDOWN STRUCTURE:** We develop a work breakdown structure that breaks down the project into manageable tasks and establishes dependencies between them.

**GANTT CHART:** We develop a Gantt chart that visually represents the project schedule and identifies critical paths, milestones, and deadlines.

**RESOURCE ALLOCATION:** We allocate resources to project tasks and ensure that resources are utilized efficiently and effectively.

**SCHEDULE MONITORING:** We monitor the project schedule and make adjustments as necessary to ensure the project stays on track.

**COST ESTIMATION:** We develop cost estimates that accurately reflect the cost of the project, including direct and indirect costs.

**TIME ESTIMATION:** We develop time estimates that accurately reflect the time required to complete project tasks and milestones.

**RISK ASSESSMENT:** We assess potential project risks and develop risk contingency plans that account for the potential impact on project cost and time.

**QUALITY CONTROL:** We establish quality control measures that ensure the project meets or exceeds industry standards and client expectations.

**CHANGE CONTROL:** We establish change control processes that manage changes to the project scope, schedule, and budget.

**ISSUE MANAGEMENT:** We manage issues that arise during the project and develop solutions that minimize their impact on the project.

## 2.9. Level-1 Inspections:

We perform visual inspections of structures to identify any obvious signs of distress or deterioration. The inspector conducts a walk-through of the structure to look for any signs of damage, such as cracks, spalling, settlement, or water damage.

## 2.10. Level-2 Inspections:

We conduct more detailed assessments of structures, including in-depth visual examinations and some basic testing to identify any hidden issues. The inspector may use specialized tools to measure the soundness of the structure, such as sounding hammers, infrared cameras, or moisture meters. The inspector may also perform some basic load testing to check the structural capacity of the elements.

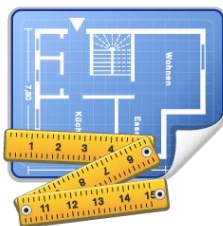
## 2.11. Level-3 Investigations:

We perform comprehensive evaluations of structures that include a detailed analysis of the structure's design, materials, and load-carrying capacity. This includes non-destructive and destructive testing to assess the structural capacity of the elements. The investigation may include non-destructive testing, such as ground-penetrating radar, ultrasonic testing, or x-ray inspection, to assess the condition of the structural elements. The inspector may also perform destructive testing, such as core sampling or load testing, to assess the structural capacity. The goal of a level-3 investigation is to identify any issues that may require major repairs or rehabilitation of the structure. It is typically performed when there are significant concerns about the integrity of the structure, such as after a major event like an earthquake or a fire.

## 2.12. CAD SERVICES

We provides timely and accurate computer-aided drafting and mapping services to support the building, maintenance and construction initiatives of Buildings. Our team of dedicated professionals specializes in: developing and maintaining databases related to CAD, as-built, and floor plans for all types of buildings and selected leased properties. We also retain the site, utility and thematic maps, as well as provide specialized software and other project-specific support to all stakeholders. Our goal is to provide excellent customer service.

### Computer-Aided Design (CAD)



- Architectural operational floor plans
- Telecommunications operational floor plans

### Geographical Information Systems(GIS)



- Base Map
- Thematic Maps
- Utility Maps

## 3. CONTACT DETAILS

### **Midas Solutions**

Level-1 Suit3, Wattletree Crt, Burnside Heights 3023 Victoria

Phone: +61-459-074 603

[www.midassolutions.com.au](http://www.midassolutions.com.au)

[info@midassolutions.com.au](mailto:info@midassolutions.com.au)